

# EDUCATION

IN

*Motion*



## MESSAGE FROM THE CEO

*Alton Delane*

Hello and welcome!

As the proud, new owner of SMALLab, I am beyond excited and truly blessed to connect with you through the first edition of our new *Education in Motion* newsletter. Over the past few months, our team has been speaking with SMALLab customers and partners to better understand their needs, challenges, and goals in preparing our children to succeed academically as the world continues its recovery from the COVID-19 pandemic.

We are convinced more than ever that SMALLab's embodied learning approach which incorporates whole-body movement in the learning process and is rooted in rigorous academic research, is uniquely qualified to address and overcome the learning losses and social emotional challenges students have experienced over the past two years. Extending beyond normal school hours, SMALLab offers a fresh, productive addition to after-school and summer school programming.

Pursuant to such, we've developed a robust pipeline of new content, product improvements, and services which we believe will make SMALLab easier to deploy, address a broader range of subject areas and even more fun!

This is engaged learning! This is education in motion!

### IN THIS ISSUE

---

**MESSAGE FROM THE  
CEO**

---

**SOCIAL EMOTIONAL  
LEARNING THROUGH  
MOVEMENT**

---

**WOMEN'S HISTORY  
MONTH**

---

**ESSER FUNDS**

---

**PRODUCT SPOTLIGHT**

---

**CUSTOMER SPOTLIGHT**

---

**COMING SOON**

---

888-278-4620

[www.smallablearning.com](http://www.smallablearning.com)

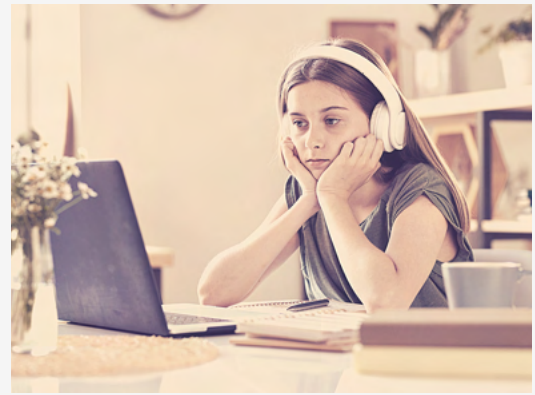
## SOCIAL EMOTIONAL LEARNING THROUGH MOVEMENT

by Kim Hall

The impact of the global pandemic has influenced many factors in education - most importantly - a student's **social emotional learning**. The isolation of remote learning has caused students to lose essential skills like patience, communication, and controlling impulses and emotions. Skills like these are essential to a student's academic and personal growth.

The body is a valuable tool that influences the mind and increases comprehension through movement. Taking the embodied learning approach through instruction allows students to display skills such as collaboration, decision-making, patience, and showing emotion.

Let's put down the personal devices and **GET UP AND MOVE** to help increase interaction, engagement, and cognition!



## WOMEN'S HISTORY MONTH



Each March, we celebrate **Women's History Month** in an effort to recognize accomplishments of women across the globe.

We would like to recognize all of the amazing women (*including our own co-founder, Mira Riley*) who have devoted their careers to improving education and providing a better future for the next generation.

## ESSER FUND APPROVED

Elementary and Secondary School Emergency Relief

### EVIDENCE-BASED INTERACTIONS

SMALLab's research-driven pedigree meets the Tier 1 - Strong Evidence standard under Every Student Succeeds Act (ESSA). Promotes regular and substantive educational interactions between students and teachers.

### INCLUSIVE, MULTIMODAL LEARNING

SMALLab Grant Program offers financial assistance to schools in need based on social and economic factors. Multimodal learning can address the needs of children with learning disabilities, English learners, and others.

### SOCIAL, EMOTIONAL, & ACADEMIC

Boost student morale and performance with statistically significant improvements in student achievement and collaboration. Extend the learning experience with after-school and summer school activities.

### WAYS TO USE ESSER FUNDS

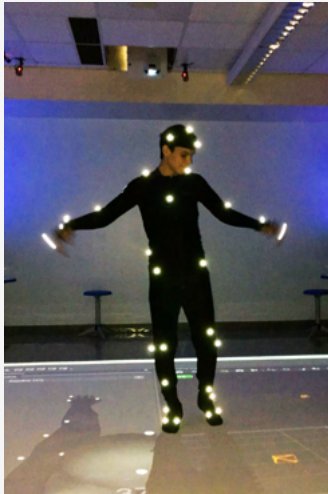
- Install SMALLab in additional schools within your district
- Prepaid software subscription and renewals
- SMALLab Animation Studio add-on



# THE SMALLAB

# Spotlight

## ANIMATION STUDIO



**SMALLab is a fully-featured, 3D motion-capture studio in your school.**

### ANIMATION COURSE INCLUDES:

- Learning the fundamentals of **MOTION-CAPTURE**
- Investigating the **HISTORY & PRINCIPLES** of animation
- Creating **3D ANIMATED CHARACTERS** with rigs, models, and animations

By the end of the course, your students will be creating fully animated 3D movies using industry-leading tools.

## NEW CUSTOMERS



# COMING SOON

INNOVATION  
PREPARATORY  
ACADEMY

Wesley Chapel, FL

*New SMALLab installation*



LAMAR ELEMENTARY  
GOOSE CREEK CONSOLIDATED  
SCHOOL DISTRICT  
Baytown, TX

*New SMALLab installation*

### SMALLAB SCENARIO TEACHING GUIDES

Each week, SMALLab educators will receive a new teaching guide for a different Smallab learning scenario. Includes: getting started, standard-aligned content catalog, teaching ideas, and more!

**Anxious to learn about a specific scenario?**

[LET US KNOW](#)

### SMALLAB/WINK! CONTENT

We are working on new additions and updates to our SMALLab standard-aligned content including courses, activities, assessments, and writing prompts.

**Have an idea or request for content?**

[SUBMIT A REQUEST](#)

### EDMOTION WEBSITE

The new EdMotion website is under construction. Look for updates and announcements for our official launch!